

Photoshop Tutorial - Easy Highlighting

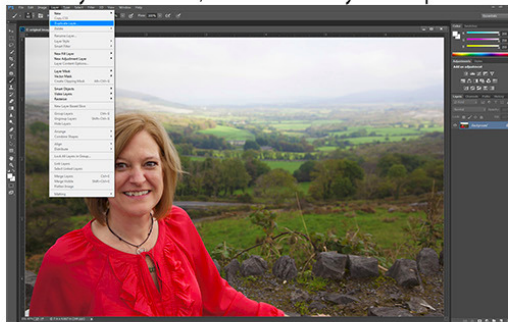
Here is a quick tutorial that I learned from Scott Kelby. It will work on a variety of images and gives you a simple way to emphasize the subject of your image.

OPEN YOUR IMAGE IN PHOTOSHOP

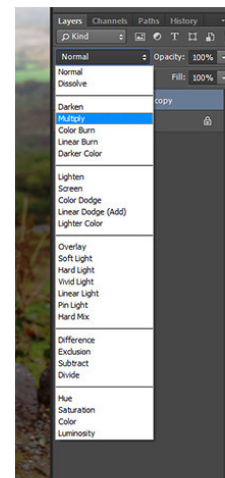
(This technique will work with any version of Photoshop that allows you to create a layer mask)



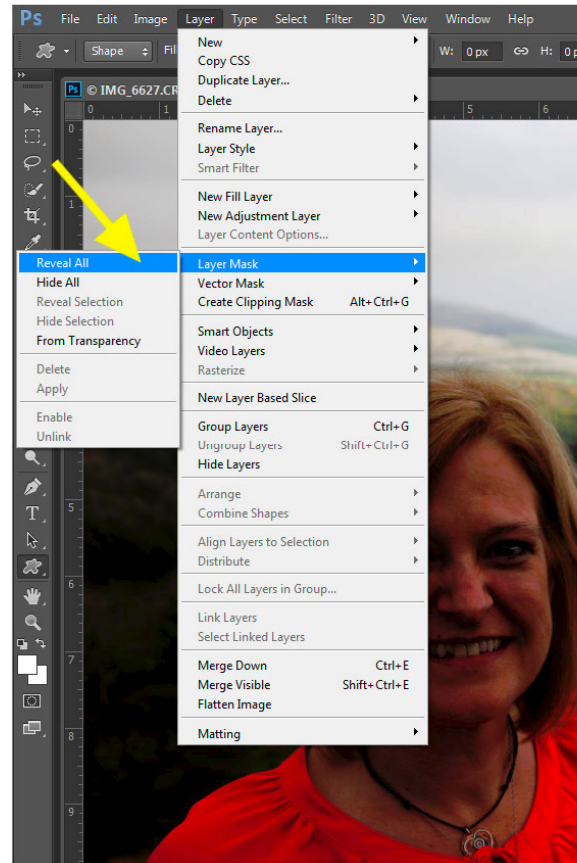
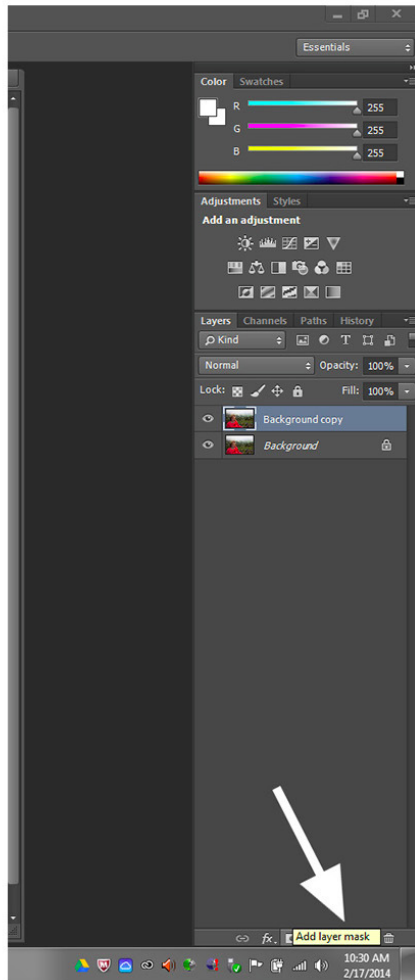
DUPLICATE THE BACKGROUND LAYER - Press CTRL+J, or drag the layer down to the New Layer Icon at the bottom of the Layer's Palette, or choose "Layer - Duplicate Layer" from the main menu



CHANGE THE BLENDING MODE of this second layer to "multiply" by clicking on the blending mode and choose "multiply" from the drop down menu. This will darken the entire image

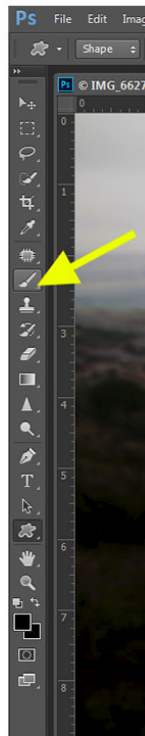


ADD A LAYER MASK to this layer by clicking on the “AddLayer Mask” icon at the bottom of the Layer’s Palette. Or, go to the Layer menu, choose Layer Mask, and then Reveal All. This will create a white layer mask next to the image thumbnail in the background copy layer.

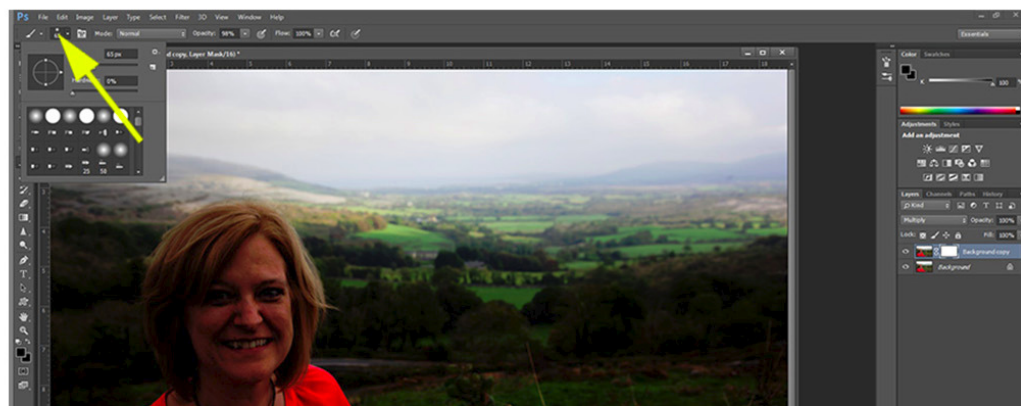


THIS WILL CREATE A WHITE LAYER MASK next to the image thumbnail in the background copy layer.

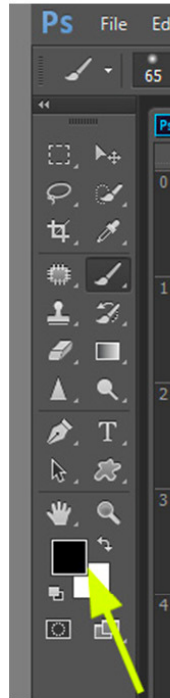
CHOOSE THE BRUSH TOOL by tapping th "B" key or clicking the brush tool in the Tool's Palette.



SELECT A SOFT (zero feather) round brush set to 100% opacity.



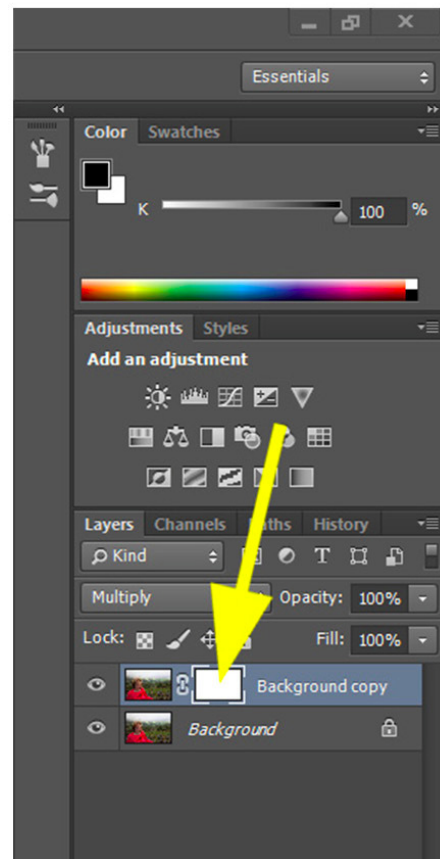
CHOOSE BLACK AS YOUR FOREGROUND COLOR by pressing "D" to set the Default colors to black and white. Then press "x" to make black the foreground color in the box near to bottom of the Tool's Palette.



RESIZE THE BRUSH to loosely cover the part of the image you want to highlight using the left and right bracket keys.

MAKE SURE THE LAYER MASK is selected in this second (active) layer by looking for a narrow white border around the mask icon.

IF THE BORDER is around the thumbnail instead of the mask, just click the mask to make it active.



NOW LEFT CLICK once over the area you want to highlight.



This will block the darkening effect caused by the multiply blending mode, revealing your subject surrounded by a darker background.

IF THE BACKGROUND is too dark for your liking, just lower the opacity of the layer to lessen the darkening effect.

FOR A DARKER BACKGROUND, just duplicate the layer by dragging it to the new layer icon at the bottom of the Layer's Palette.

HIGHLIGHT JUST ONE AREA OF YOUR IMAGE, or add more highlighted areas by clicking on them with the same brush resized with the bracket keys.

Follow your Vision!

